

## Old Pete Props

Each classroom can create their own graphic, drawing or cut-out for Ole Pete. For suggested sizing, he should take up most of a 8.5X11 sheet.



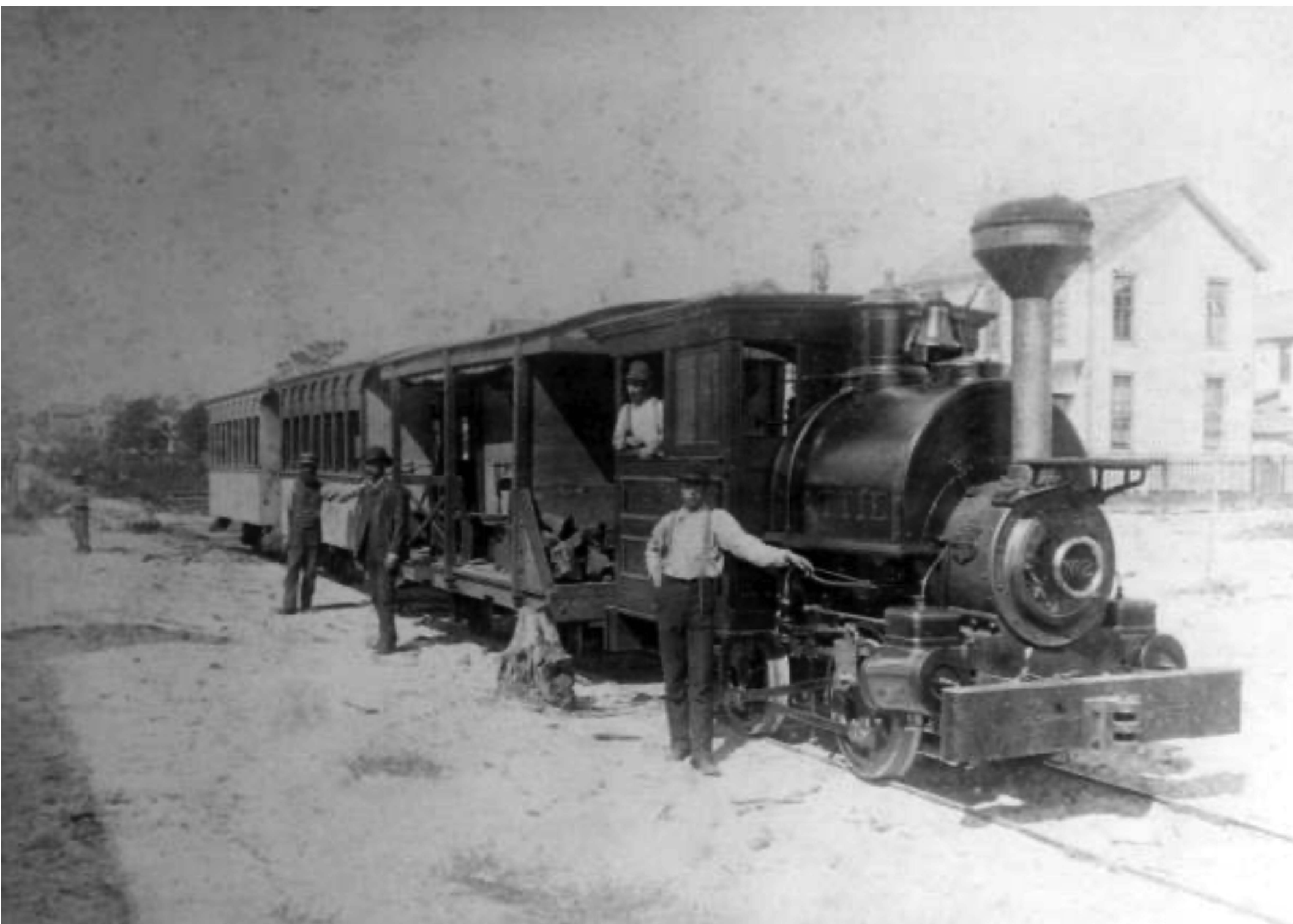
Before Butting Heads

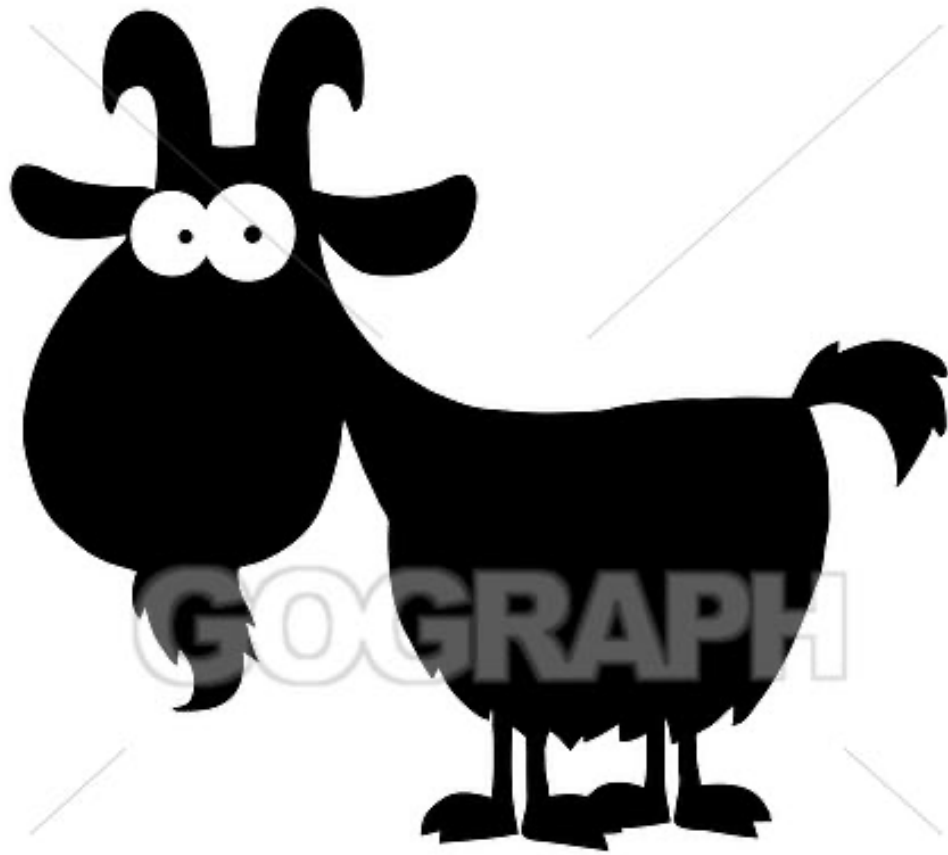


Coconut



Trains

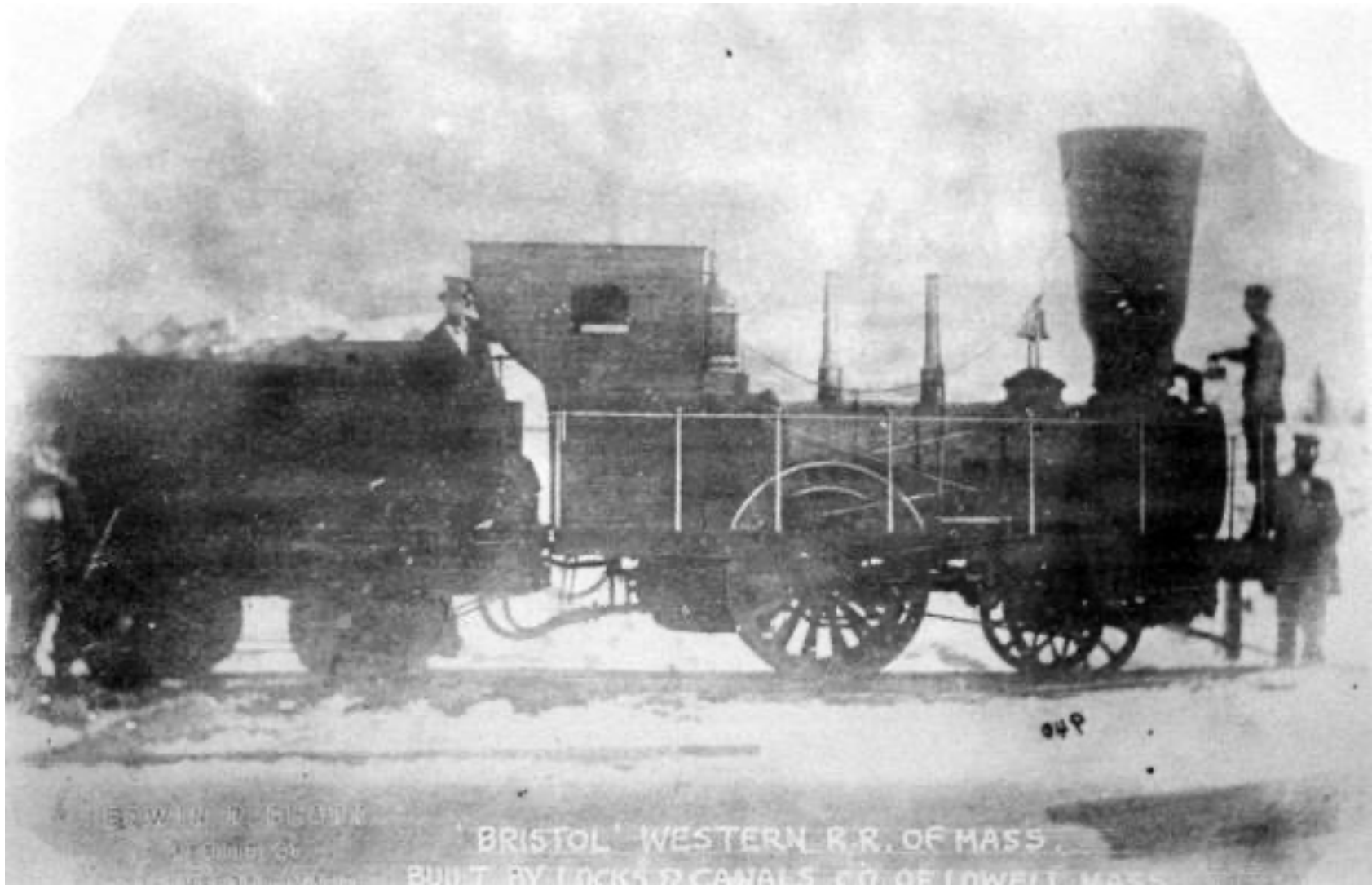




"Woozy" Goat



Henry Plant



## Other props:

- A ship's anchor, make the size of a poster board
- Use sporks for little tools
- Train shed, also the size of a poster board