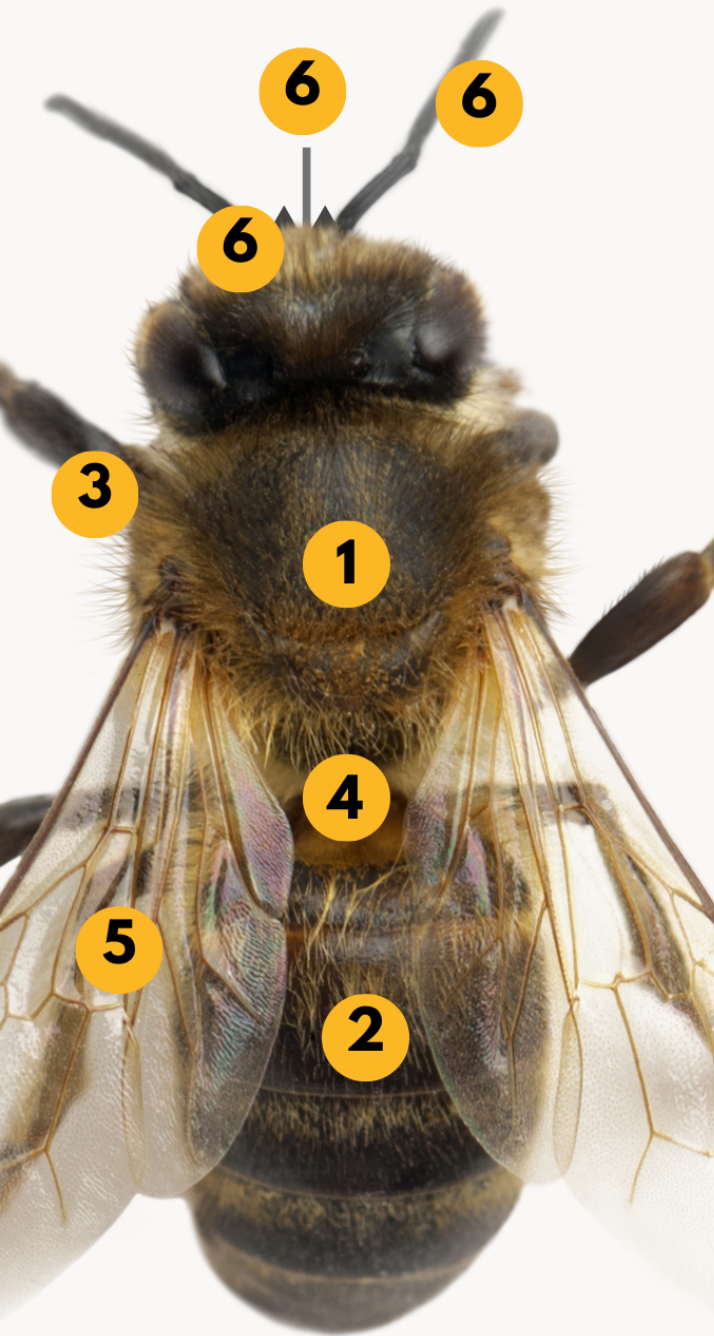


BEE ANATOMY

PARTS



1. THORAX

The thorax is where the wings and legs are attached to the bee

2. ABDOMEN

The abdomen is where the guts of the bee are as well as their stingers.

3. LEGS

The legs of the bee are where the nectar are stored and carried

4. BODY

The bee's body are hairy so that pollen can easily attach to the hairs

5. WINGS

A bee has 2 sets of wings - the forewings are closest to the head while the hind wings are the farthest from the head.

6. FACE

- **Tongue** - The tongue allows the bee to get nectar from plants
- **Mandibles (jaws)** - They allow the bee to protect themselves and the hive.
- **Antenna** - Bee's use their antenna to smell and to tell when things are close by.

