



FLGeoWeek.com

Learn Your Geography, Florida

2016



Florida Geographic Alliance
Educating Tomorrow's stewards of Florida



Florida Geographic Alliance
Educating Tomorrow's stewards of Florida

National Geography Awareness
Week 2016



FLGeoWeek.com

Learn Your Geography, Florida

Welcome to Geography Awareness Week 2016!

Our theme this year, *The Power of Parks* encourages Florida students to get out and explore and celebrate their federal, state and local parks! The goal is to heighten awareness of our amazing Florida public lands and celebrate locally what it means to be a Floridian. The activities from this website require you to use maps and other sources to learn more about our parks and to apply that knowledge to news events unfolding today.

Each year, the Wednesday of Geography Awareness Week is dedicated to Geographic Information Systems (GIS) and we are excited to bring both GIS and a digital connection via on-line activities to Florida students. As an added feature this year you are invited to participate in a community mapping project. Students from all around the state are asked to think about their favorite place in their local community and share that place with us by Wednesday, November 16. The place should be somewhere you would take a visitor or new friend that is moving to your community to relax, enjoy or have fun. To participate, all you have to do is identify your favorite place, find an address, or better yet, take a GPS point for the location, and write a sentence or two describing what it is and why you think someone should visit! Then go to the Geography Awareness Week website and click the Community Maps link and input your information at <http://fga.freac.fsu.edu/gaw/>. If you would like to add a digital photo, you can send one along with the address or GPS point, but it is not necessary to participate.

We hope that students and families who participate in this year's Geography Awareness Week program will come away with a new understanding of how fun geography can be and the important role we play as citizens in our Florida Communities.

Signed,
The Florida Geographic Alliance



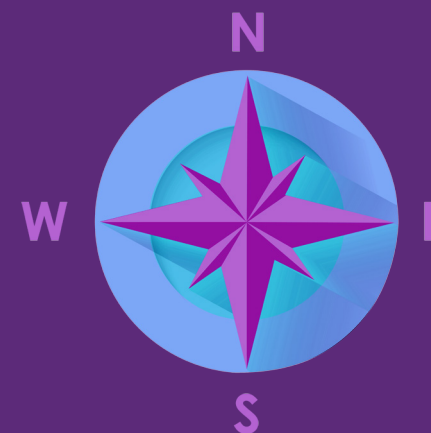
Copyright © 2016 Florida Geographic Alliance, All rights reserved.

The Power of Parks

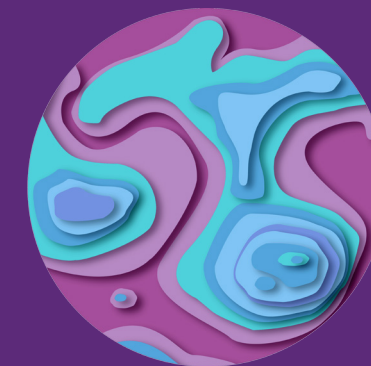
WEEK OF ACTIVITIES



3 MAPPING MONDAY
November 14th 2016



5 TRAVELLING TUESDAY
November 15th 2016



7 WANDERING WEDNESDAY
(GIS)
November 16th 2016



9 TOURIST THURSDAY
November 17th 2016



11 FLORA & FAUNA FRIDAY
November 18th 2016



MAPPING MONDAY!

“Great minds discuss cartography; average minds discuss events; small minds discuss people.” ~ Anonymous



Word of the Day:

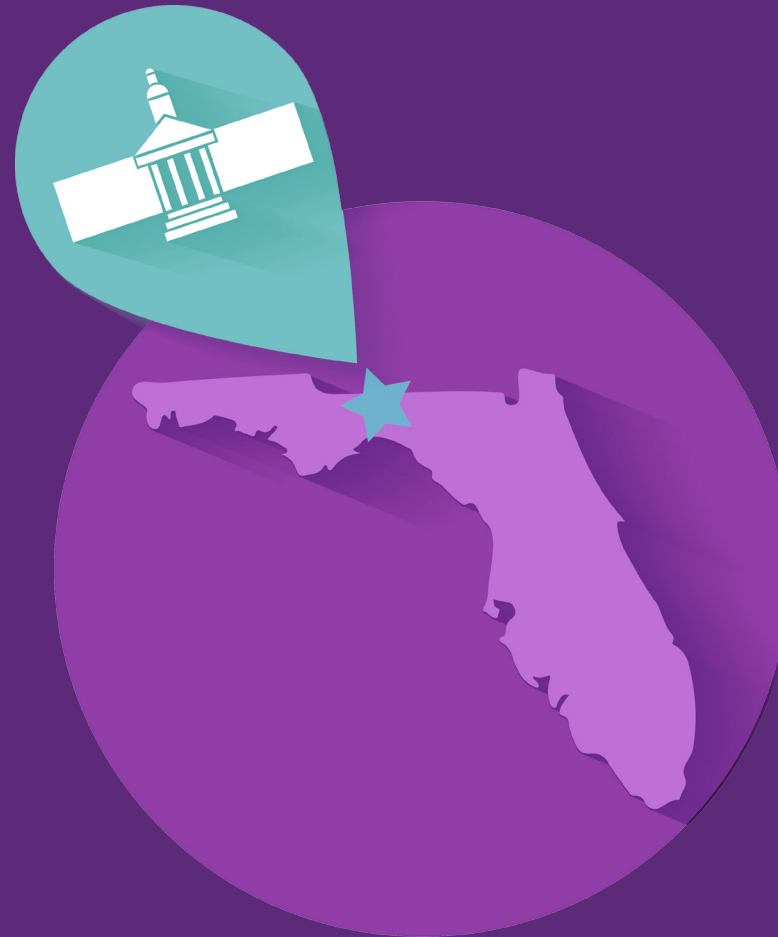
CARTOGRAPHY

A cartographer is a person who creates maps, whether they are of the world, the local bus routes, or buried pirate treasure.

Today's BELLRINGER

Use the following Quizlet to learn 14 new map terms!

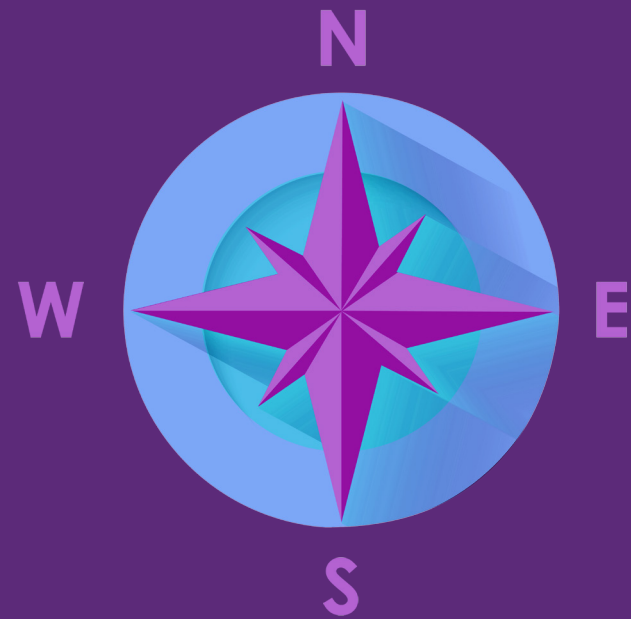
<https://quizlet.com/6613963/flashcards>



ACTIVITY!

Distribute a map of Florida, or several maps to each student or group.

Look at the maps and brainstorm. What information can you gather about the state of Florida? (Look at symbols, colors, bodies of water shape, etc....)



TRAVELLING TUESDAY!

“Interdependence is a fact, it’s not an opinion.” ~ Peter Coyote

Word(s) of the Day:

INTERDEPENDENCE

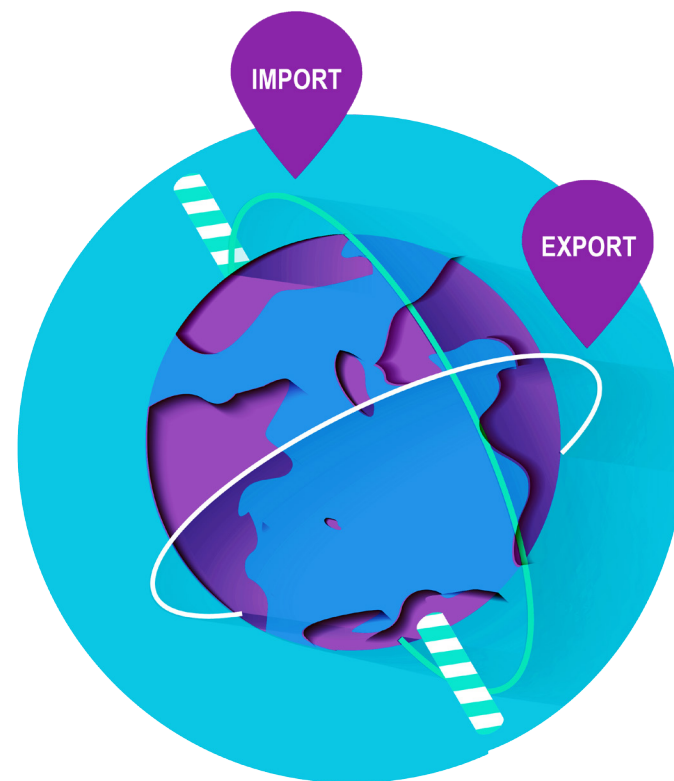
When two or more people, groups, or things rely on each other (dependence).

IMPORT

Means "to bring from a foreign or external source; especially to bring—as merchandise—into a place or country from another country."

EXPORT

Means "to carry or send—as a commodity—to some other place, such as another country."



Major shipping routes of Florida products (scroll down for map):

<http://www.freshfromflorida.com/Divisions-Offices/Marketing-an>

Today's BELLRINGER

Ask students to brainstorm examples of Florida's imports and exports.



ACTIVITY!

Divide students into three groups to complete the Florida export worksheet. Assign one mode of transportation to each group (3).

Students will interpret the Major Shipping Routes of Florida Products map to determine which products Florida exports by airplane, ocean vessel, or truck, and to what locations the products are delivered.

Extension: Discuss student discoveries.



Include www.netstate.com with lesson plan resources (click on Florida and then click on Economy at the bottom of the page)



WANDERING WEDNESDAY! [GIS]

“Do not go where the path may lead, go instead where there is no path and leave a trail.” ~ Ralph Waldo Emerson

Word(s) of the Day:

GEOGRAPHIC INFORMATION SYSTEMS [GIS]

GIS is a computer-based system that collects, stores, manipulates, analyzes, manages and presents all types of spatial and geographical information on a map.

POKEMON GO

an augmented reality, GPS-based, mobile device game which uses real-world locations to gather virtual items.



Today's BELLRINGER

Use a Pokemon character you have saved on your camera or create a Pokemon character to write a brief adventure story. Don't forget to include the location of your Pokemon find (GPS points if known).

How does Pokemon Go utilize GPS?

Add to teacher resources – How to Utilize Pokemon Go in the classroom
<http://blog.discoveryeducation.com/blog/2016/07/13/pokemongo/>

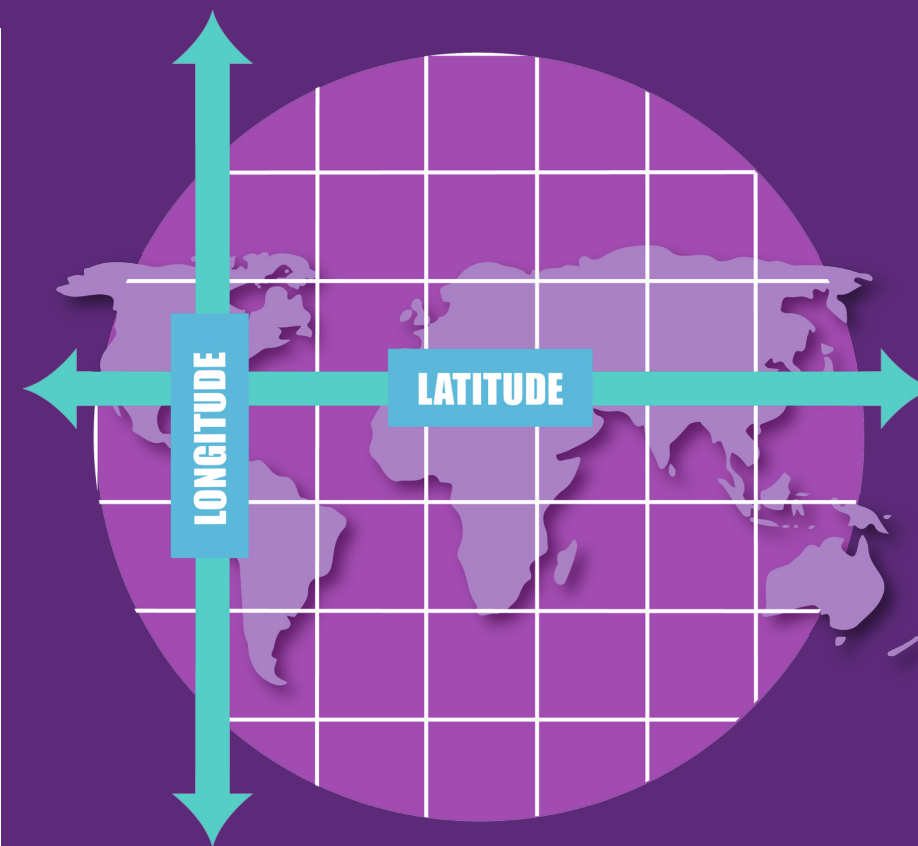


ACTIVITY! Latitude and Longitude

Using Google Earth

Latitude and Longitude is a grid system that is used by humans to give a geographic address to each point on the Earth's surface. Latitude is consisted of concentric circles that circle the earth called parallels. Longitude can be defined as an arbitrary north-south line between the two geographical poles. Lines of longitude are referred to as meridians. Google Earth has the latitude and longitude coordinates built in to the program. In this lesson, we will use this tool to find some features and latitude and longitude coordinates.

Download the full plan [here](#).





TOURIST THURSDAY!

“We won’t have a society if we destroy the environment.”
~ Margaret Mead



Word of the Day: **ECOTOURISM**

The practice of touring natural habitats in a manner meant to minimize ecological impact.

Today's **BELLRINGER**

Draw or describe a Florida attraction that you have visited or know of that is NOT a Florida theme park. Share your drawing or description with your shoulder partner – Can your partner guess the attraction? Together locate the attraction on the [map](#).



Teacher Resources:
<https://www.google.com/search?q=Florida+map+of+attractions&ie=UTF-8&oe=UTF-8&hl=en-us&client=safari#impr=i3Em3uXzQqr7VM%3A%3Bf2JpKhsnMew9qM%3A%3Bf2JpKhsnMew9qM%3A&imgsrc=f2JpKhsnMew9qM%3A>
<http://gadling.com/2012/06/18/ten-florida-attractions-that-are-not-theme-parks/>



ACTIVITY!

Create a sign to promote Ecotourism in your NOT a theme park attraction. For example - illustrate the “Golden Rule of Ecotourism - Clean Up After Yourself.” Display your completed sign - Don’t forget to mark the location on the Florida map of your NOT a theme park attraction.

<https://www.floridastateparks.org/things-to-know/park-rules>



FLORA & FAUNA FRIDAY!

“Humans and plants have much in common. Both enjoy sunlight, music, and tender loving care.” ~ Laura Stuchinsky



Word(s) of the Day:

FLORA

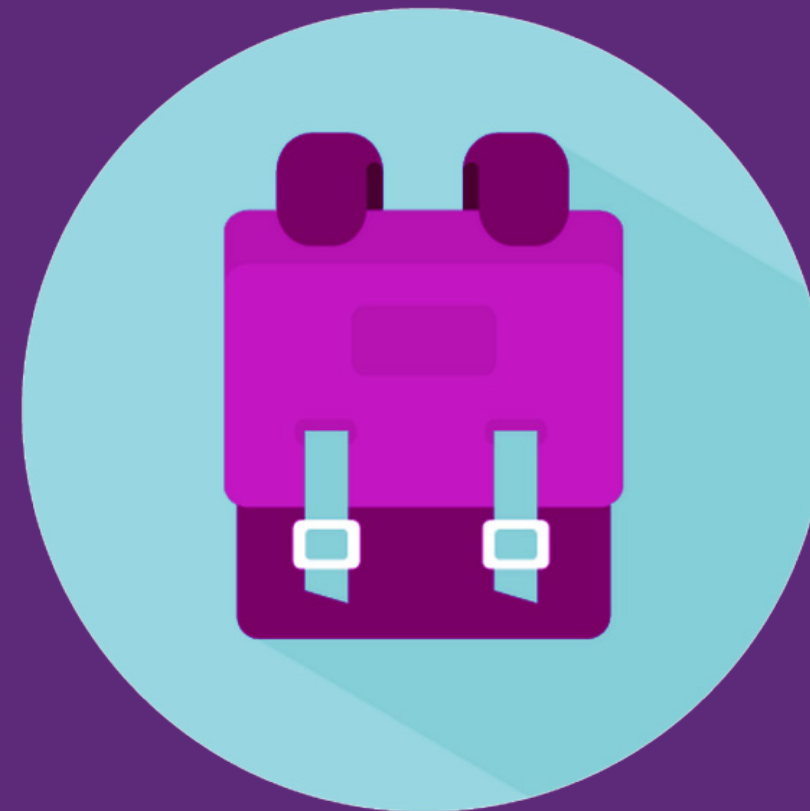
The plant life in a particular region or time.

FAUNA

All of the animal life in a particular region or time.

Today's BELLRINGER

Look at the [pictures of a Florida Red mangrove Tree, nicknamed The Walking Tree, and the Florida mangrove map](#) to answer the question ---What critical roles do mangrove trees play in the Florida ecosystem?



ACTIVITY!

Grab a clipboard, ruler and your observation recording sheets to identify and record flora & fauna in your school habitat.

Extension: Matching card game w/ Flora & Fauna

FUN FINISHES

Middle School Florida Geography Facts

http://www.softschools.com/quizzes/geography/floridas_geography/quiz4342.html

*Can use PLICKER app (See [Websites](#) for instructions)

FOLLOW US ON SOCIAL MEDIA



Florida Geography Awareness Week



@flgeoalliance



@flgeoalliance



flgeoweb.com

Make sure to use the hashtag [#FLGeoWeek](#) in any of your social media posts! You could be featured on our social media!

